

CEILING DOMES INSTALLATION INSTRUCTIONS

Century ceiling domes are made from either a fiberglass polyester composite material or a high-density, furniture grade polyurethane. Domes are highly detailed, single piece construction and are factory primed.

Tools & Materials You Will Need

Read Appropriate Application Instructions for Tool & Material List

Sponge or clean cloth	Jig or Saber saw with fine cutting blade
Putty knife	Circular saw or carpenter's saw
Caulking gun	Metal cutting twist drill bit
Elastomeric adhesive caulk [White Lightning® 3006 recommended]	Hacksaw
Butcher Paper - for making template	
Construction wire [stainless steel recommended]	Ceiling wallboard
Flat head wood screws	Ceiling joists and framing lumber
Shims	

Before Installation

- 1 Check local building code requirements to ensure compliance. It is installer's responsibility to conform to all code requirements.
- 2 Installing a dome in any situation is rated as "very difficult / professional- must have exceptional carpentry skills".
- 3 Determine which installation method is to be followed by reading these installation instructions completely.
- 3 It is recommended that any faux finishing be complete before dome is installed.

NEVER NAIL INTO OR STRIKE SURFACE OF FIBERGLASS DOME WITH HAMMER OR OTHER SHARP OBJECT. DOING SO WILL RESULT IN DAMAGE TO DOME SURFACE.

Surface Preparation

- 1 Clean all surfaces free of dirt and loose particles with a clean cloth or sponge.
- 2 Make sure area is completely dry before installing product.
- 3 Invert dome on top of butcher paper and make a template.
- 4 Measure and mark 3" in from traced circle for rough opening.
- 5 For rimless dome installation, measure and mark 2" in from traced circle for cut line. Cut the template at the rough opening line.
- 6 Attach template to ceiling, trace template for cut line.

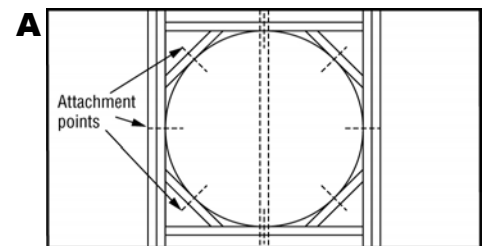
IT IS HIGHLY RECOMMENDED THAT CEILING DOMES BE INSTALLED IN NEW CONSTRUCTION APPLICATIONS, IN TRAY CEILINGS OR HIGH CEILINGS THAT CAN BE FRAMED OUT.

PRECAUTIONS

- 1 ALWAYS turn power off at breaker box prior to installation.
- 2 DO NOT use the dome to support the weight of the lighting or ceiling fan fixture.
- 3 DO NOT use the fixture or fan canopy to support the dome in any way.
- 4 ALWAYS follow light fixture and/or ceiling fan manufacturer's installation instructions for proper fixture support.
- 5 ALWAYS consult with a licensed electrician or refer to local electrical codes to assure that the fixture installation meets code requirements.

New Construction Installation

- 1 Dome should be installed before ceiling wallboard is installed with the option of installing dome up into ceiling joists or below joists.
- 2 It is highly recommended that dome installation be preplanned with the dome frame-out below joists included on blueprints.
- 3 If installing into ceiling joists it is highly recommended that you consult a construction engineer before you cut into ceiling joists, to insure that the load bearing properties of ceiling joists are not compromised.
- 4 Installing Below Joists Option: Skip step #5.



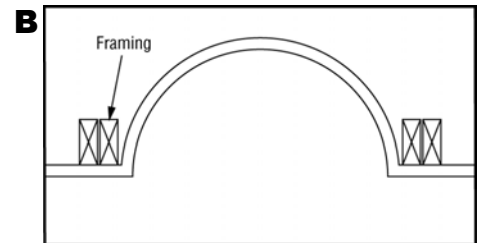
Framing plan for ceiling dome

**CROWN & CORNICE MOULDING • CHAIR RAILS & FRIEZES • DOOR & WINDOW SURROUNDS
CEILING MEDALLIONS • DECORATIVE CEILING RIMS • CEILING DOMES • WALL NICHES
PANEL MOULDINGS & FRAMING CORNERS • PILASTERS & CAPITALS • CORBELS
STAIR BRACKETS • DECORATIVE ACCESSORIES & ROSETTES**

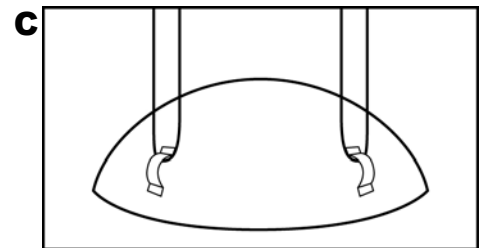
CEILING DOMES - 2

INSTALLATION INSTRUCTIONS

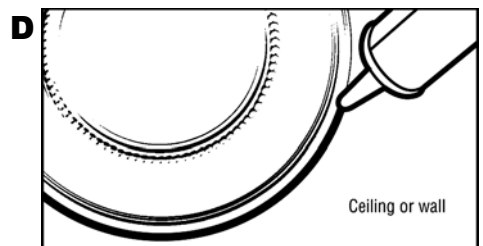
- 5 Cutting Joists Option: Cut out necessary ceiling joists. Note: You may not need to remove all joists depending upon dome depth. Cut and install double supporting joists perpendicular to ceiling joists and install framing members parallel to ceiling joists. Shim out framing to ensure snug fit of dome (A & B).
- 6 Domes have hanger strips attached to back. On overhead joists, install wood screws over hanger strips of dome, leave ½" of screw head from joist. Using construction wire, thread wire through hanger strips on dome and attach to screws installed on joists. Make sure dome is level (C) and secure.
- 7 Install ceiling board. Cut wallboard around dome leaving approx. 3" of ceiling board above the dome edges. Rimless domes may be finished out using standard drywall finishing methods.
- 8 Apply elastomeric adhesive caulk around dome edges, smooth excess adhesive/caulk around dome edge with your finger or putty knife (D). Wipe off any excess adhesive/caulk with damp sponge.
- 9 Finish dome using a high-quality latex or oil-based paint, if dome is not already faux finished.



Cross section drawing for dome installation



Thread wire through dome hangers & attach to ceiling joists



Apply paintable caulk to edges

Tray Ceiling or High Ceiling Installation

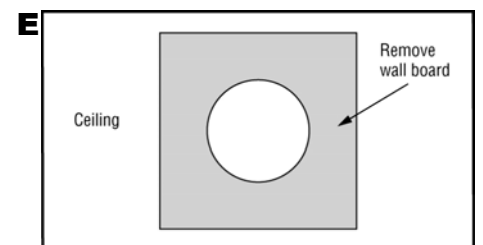
- 1 Domes have hanger strips attached to back. On overhead joists, install heavy-duty wood screws eyes over hanger strips of dome. Using construction wire, thread wire through hanger strips on dome and attach to screws installed on joists. Make sure dome is level (C)
- 2 Frame out ceiling to existing ceiling joists using standard ceiling construction practices.
- 3 Install ceiling board. Cut the ceiling board to the rough opening (inside diameter) of the dome. Rimless domes may be finished out using standard drywall finishing methods.
- 4 Apply elastomeric adhesive caulk around dome edges, smooth excess adhesive/caulk around dome edge with your finger or putty knife (D). Wipe off any excess adhesive/caulk with damp sponge.
- 5 Finish dome using a high-quality latex or oil-based paint.

Installing Dome To Existing Wallboard Ceiling

- 1 It is highly recommended that you DO NOT install ceiling domes to existing wallboard ceiling if you cannot drop ceiling height and frame out.
- 2 If application requires this circumstance, it is recommended that you remove a large area of ceiling wallboard with either a saber saw or jig type saw, and replace ceiling wallboard after dome is installed (E). Follow steps 5 through 9 in "New Construction Installation" section.
- 3 If it is necessary to cut into ceiling joists, also follow step 3 in "New Construction Installation" as described above.

Lay-In or Suspended Ceiling Installation

- 1 Make a template as described in "Surface Preparation" on page 1 of these instructions. DO NOT MARK OR CUT THE EXTRA 3" FOR ROUGH OPENING - CUT TEMPLATE TO EXACT DOME SIZE. Tape template to installation area and trace outline onto ceiling
- 2 Cut through the acoustical tiles with jig or saber saw; and metal framing using a hacksaw(F).
- 3 Domes have hanger strips attached to back. On overhead joists, install wood screws over hanger strips of dome, leave ½" of screw head from joist. Using construction wire, thread wire through hanger strips on dome and attach to screws installed on joists (C).
- 4 Finish dome using a high-quality latex or oil-based paint.

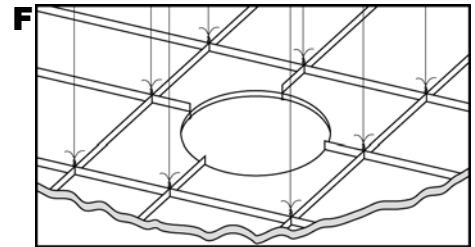


Remove large area around dome before installation

CEILING DOMES - 3 INSTALLATION INSTRUCTIONS

Dome Installation When Used With Electrical Fixture

- 1 Follow instructions above for appropriate installation application in addition to the following steps.
- 2 When dome is to include an electrical fixture, measure the fixture canopy cover. Drill a hole in the center of the dome, making sure the hole is not larger than the fixture canopy cover.
 - a. If hole is ½" to ¾" in diameter, use a metal cutting twist drill bit and cut from front of the dome.
 - b. For holes ¾" to 3" in diameter, use a saber or jig type saw and cut from front of dome.
- 3 Center and install support member to ceiling joists directly over dome for electrical junction box [A & B]. Feed wiring through hole in dome before installing ceiling wallboard.
- 4 Make sure ceiling dome DOES NOT support the weight of the lighting or ceiling fan fixture.
- 5 Follow appropriate finishing instructions from above.
- 6 Re-connect fixture or ceiling fan. Slide fixture canopy cover up to dome and tighten ring snug against dome. NOTE: You may need to purchase a longer thread pipe or down rod to anchor fixture or fan, as supplied pipe or rod may not accommodate dome thickness.



Lay-in or suspended ceiling application

Installing Artisan Domes and Artisan Lighting Coves

- 1 Install Artisan Dome as described above and in accordance with specific installation application. Note: Artisan domes are rimless and are to be installed flush to the ceiling. Rimless domes should be finished out using standard drywall finishing methods.
- 2 When installing Artisan Lighting Coves with rope lighting, the lighting fixture must be installed before the lighting cove. After lighting cove is installed, feed rope lighting inside the cove making sure that rope is not visible.
- 3 Artisan Lighting Coves fit snug within the corresponding dome size. Apply elastomeric adhesive caulk around dome edges, smooth excess adhesive/caulk around cove edge with your finger or putty knife [D]. Wipe off any excess adhesive/caulk with damp sponge.

Always Follow These Safety Suggestions

- 1 Follow good construction practices.
- 2 When using power tools, adhesives and finishing materials [such as paint or stain], be sure to follow manufacturer's instructions.
- 3 Always wear safety goggles when using a power tool or hammer.
- 4 Always use the right tool and/or equipment for the job.

Century Architectural Specialties is not responsible, nor holds any liability for installations installed incorrectly, when installations require cutting into ceiling joists or any other load-bearing member, when any installation does not meet the requirements as stated in Century warranty.

Century ceiling domes function as decorative elements only, and are not designed to support electrical fixtures or provide any load bearing capacity.

Century Architectural Specialties shall not be responsible if any failure to comply with these installation instructions results in the products failing to perform the purpose intended.

Warranty

Century Architectural Specialties warrants all its products to be free from manufacturing defects for a period of three (3) years from date of purchase. This warranty does not include damage or other problems resulting from improper installation, misuse or normal wear and tear. Century's liability is limited to product replacement cost. It does not include freight or handling expenses, installation cost or any other costs or expenses incurred in connection with the purchase or use of our products.